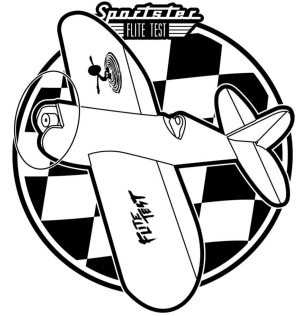




FT SPORTSTER

Designed By: Josh Bixler
 Drawing By: Dan Sponholz



www.flitetest.com

SPECIFICATIONS

DESCRIPTION		IMPERIAL	METRIC
LENGTH		30 in	762 mm
CENTER OF GRAVITY	CG	2.5 in	63 mm
WING SPAN		39 in	990 mm
WING AREA		380 in ²	24.5 dm ²
DRY WEIGHT		15.2 oz	430 g
ALL UP WEIGHT	AUW	21.9 oz	620 g
WING LOADING	WL	8.3 oz/ft ²	25.3 g/dm ²
WING CUBIC LOADING	WCL	5.1	

RECOMMENDED SETTINGS

	THROW	EXPO
AILERON	12-16°	30%
ELEVATOR	12-16°	30%
RUDDER	12-16°	30%

SHEET & TILE KEY



1	2	3	4
5	6	7	8

9	10	11	12
13	14	15	16

17	18	19	20
21	22	23	24

25	26	27	28
29	30	31	32

DRAWING KEY

FOLD TYPES



A - FOLD (ABOVE)



B - FOLD (BESIDE)



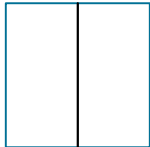
C



C - FOLD (COVER)



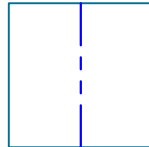
LINE TYPE/COLOR



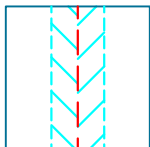
CUT



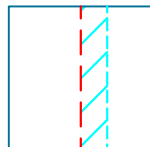
50% SCORE



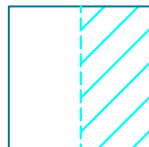
CREASE



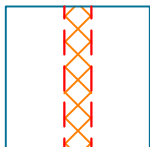
45° DOUBLE BEVEL



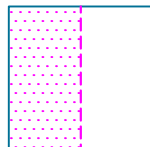
45° SINGLE BEVEL



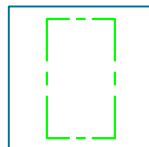
EDGE BEVEL



CAVITY



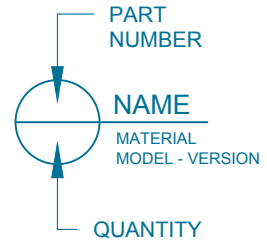
REMOVE PAPER



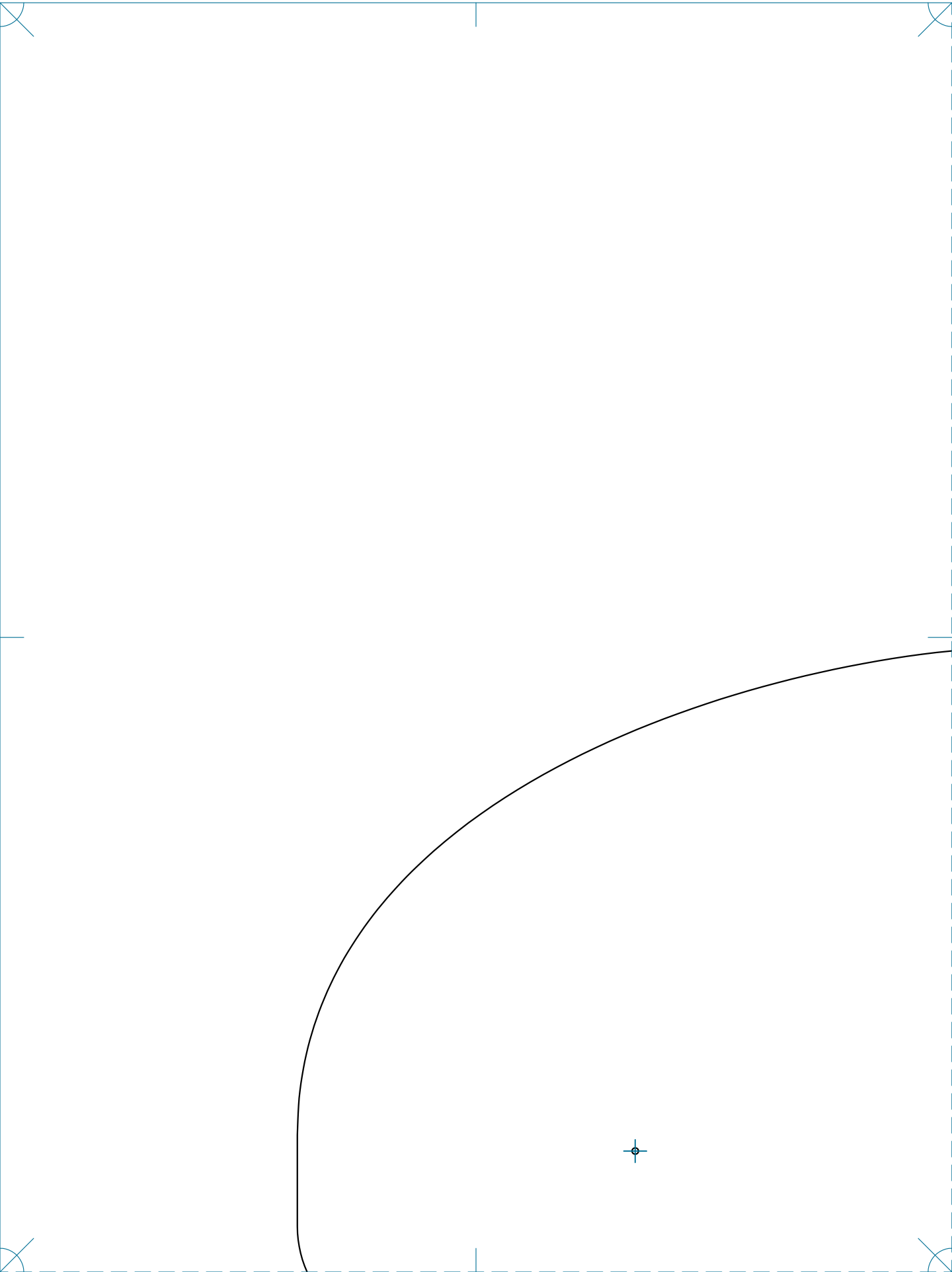
REFERENCE/
OPTIONAL



SYMBOLS

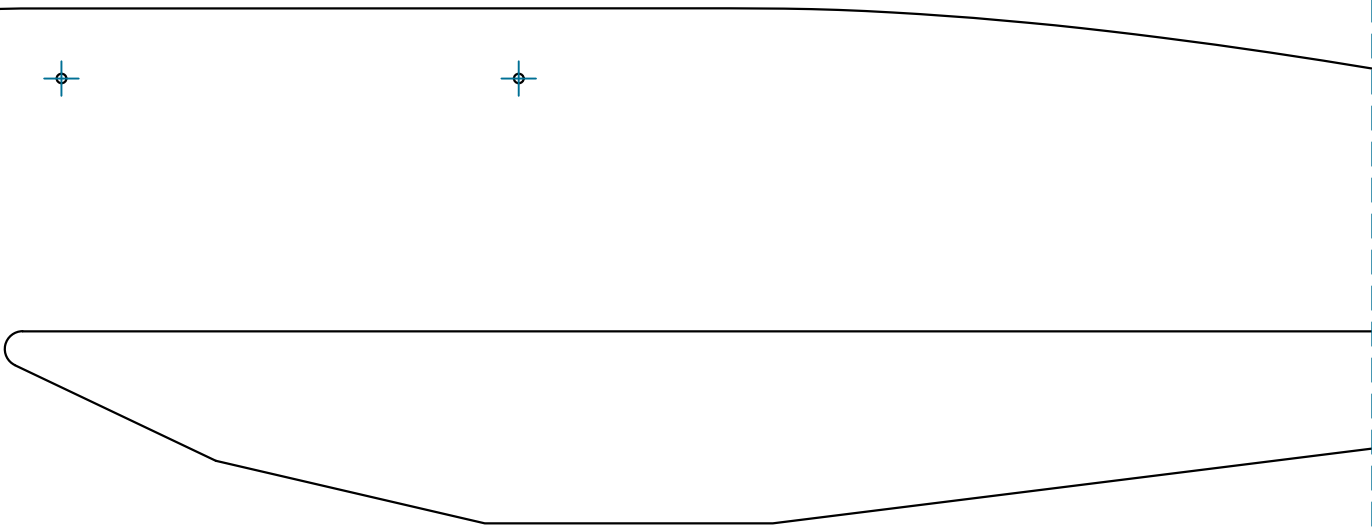


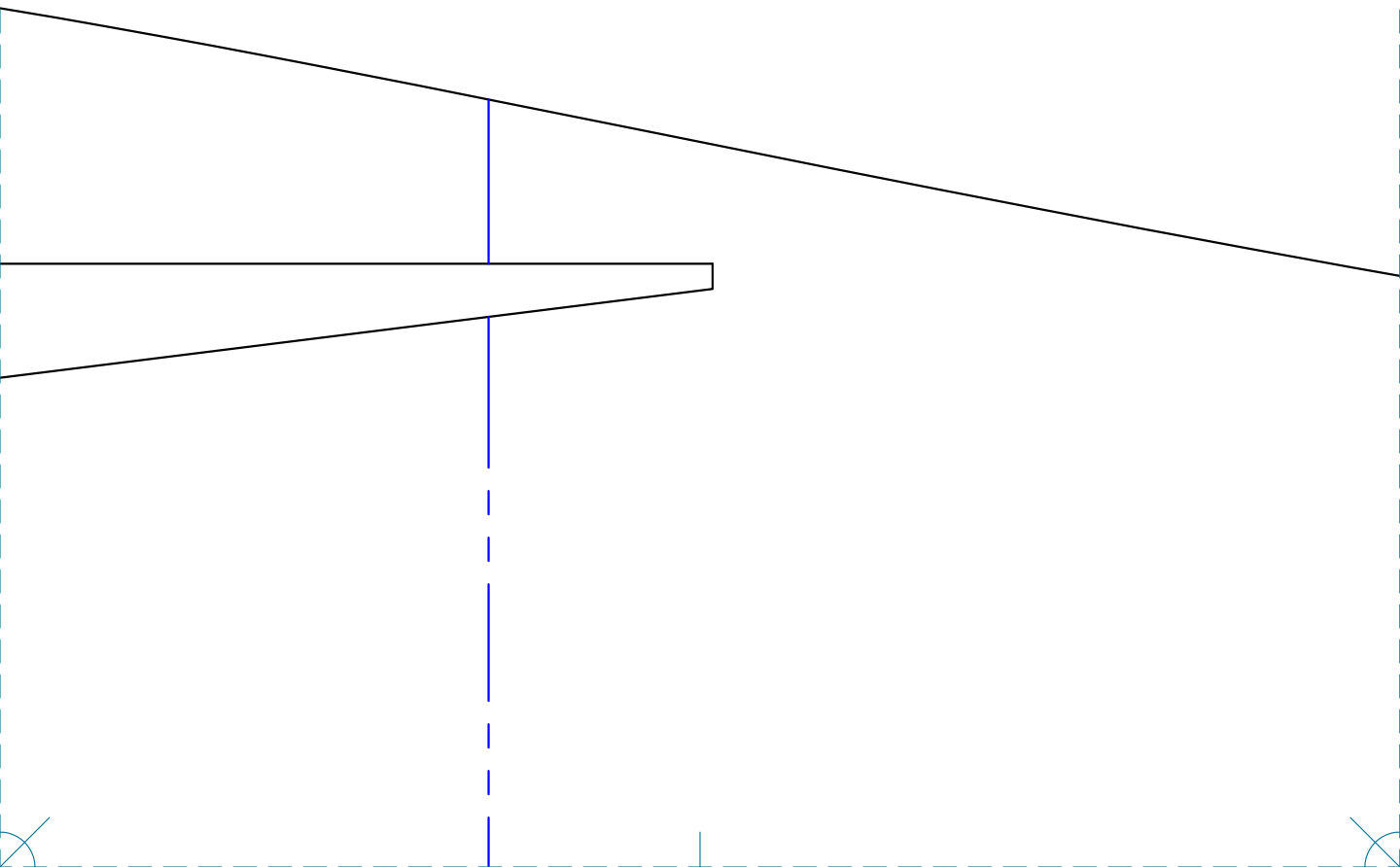
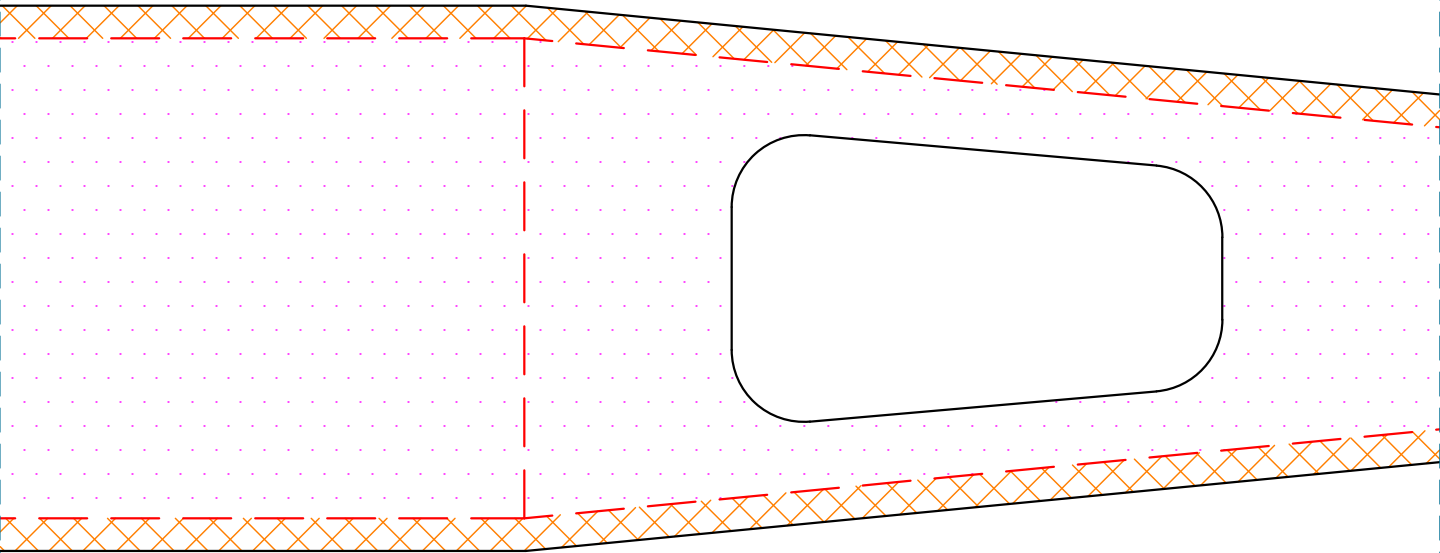
MIRRORED PART

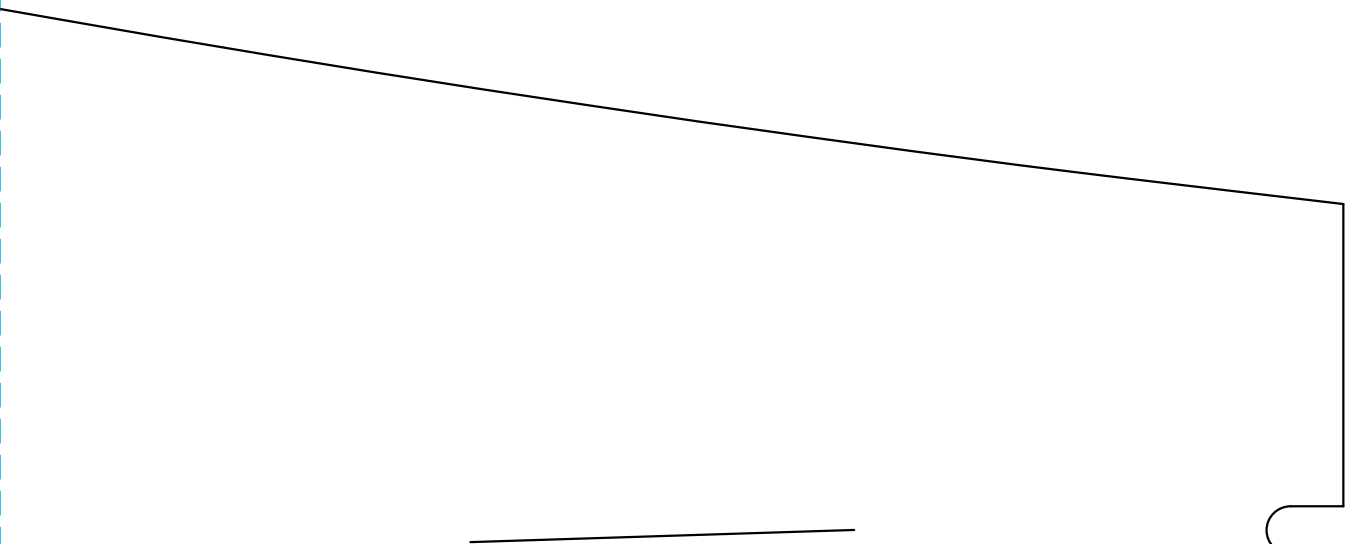
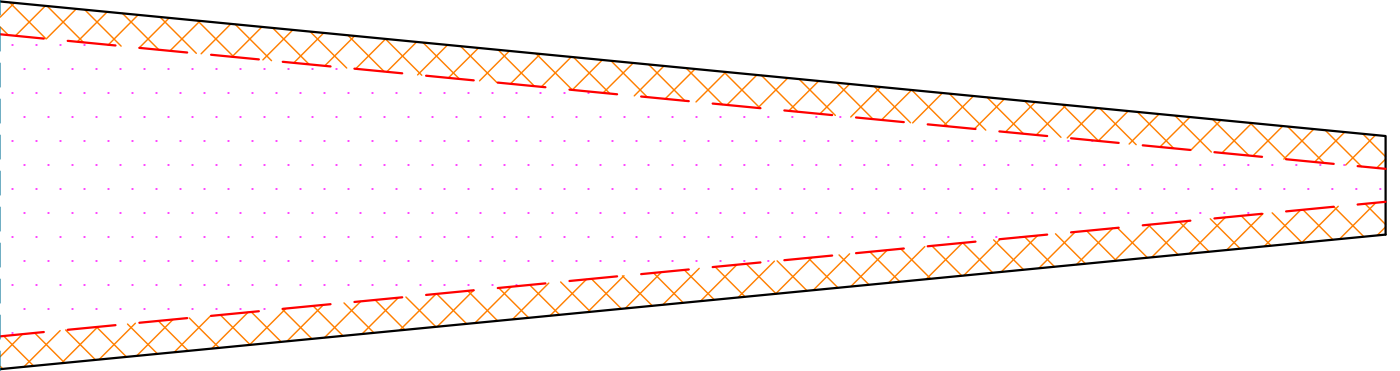


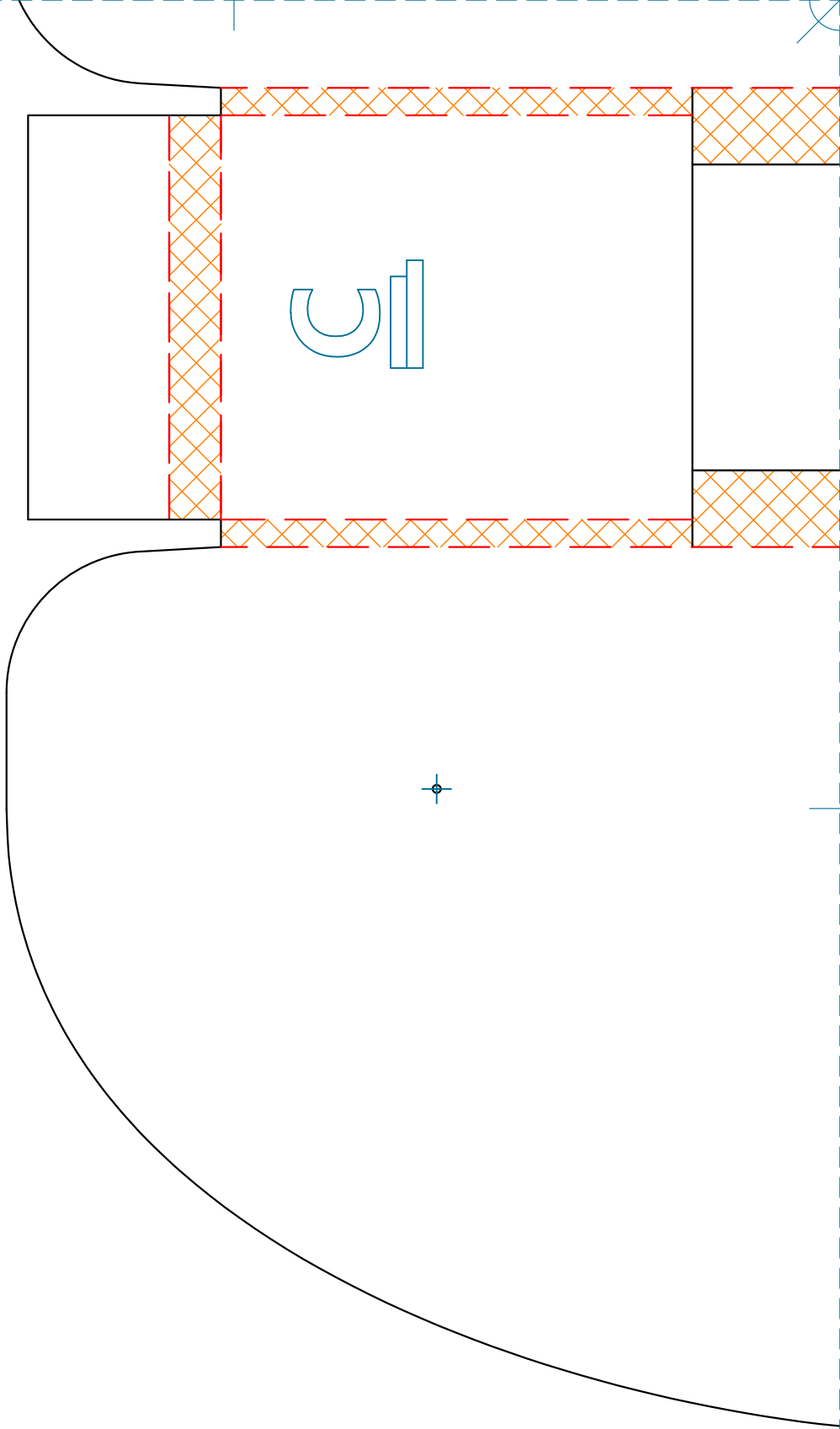


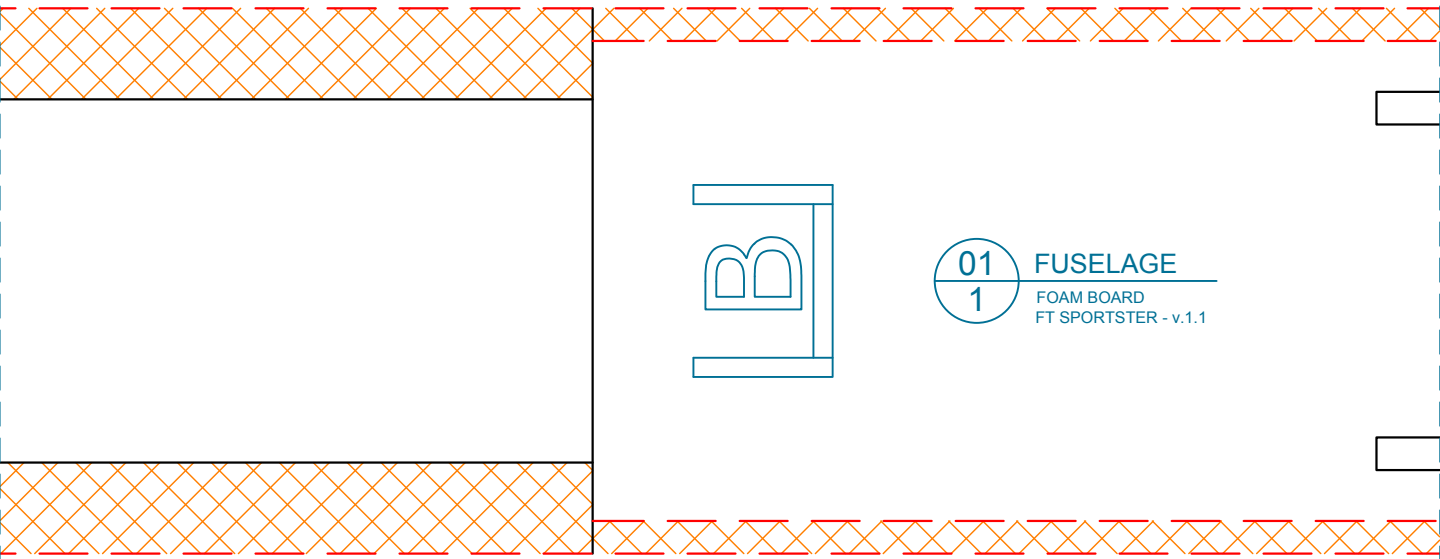
02
1 FUSELAGE SHEETING A
FOAM BOARD
FT SPORTSTER - v.1.1





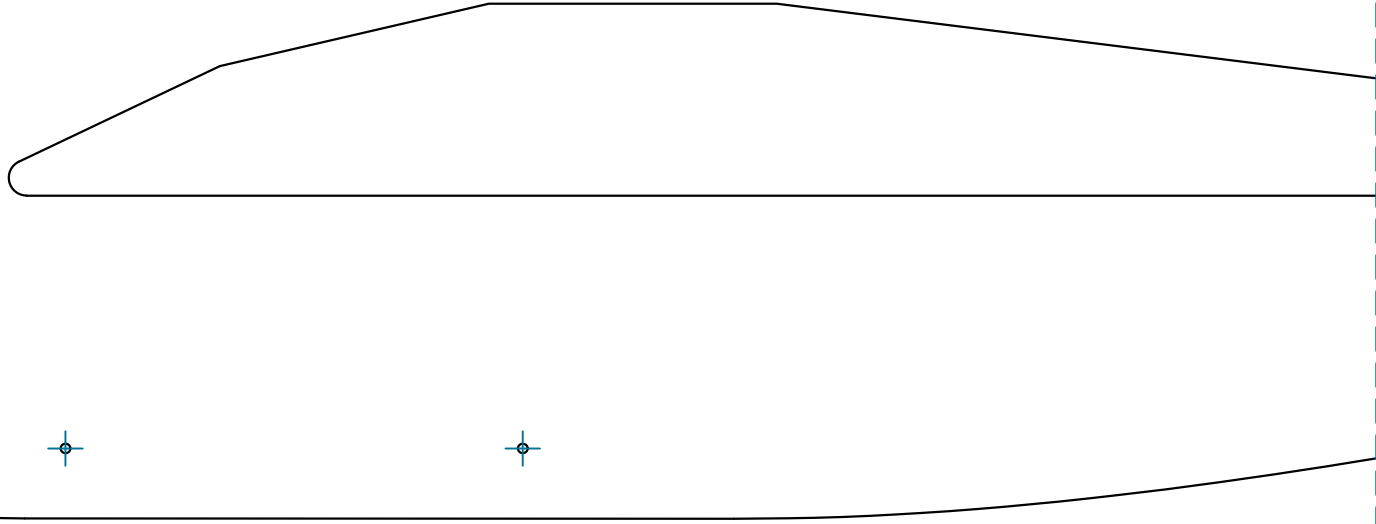


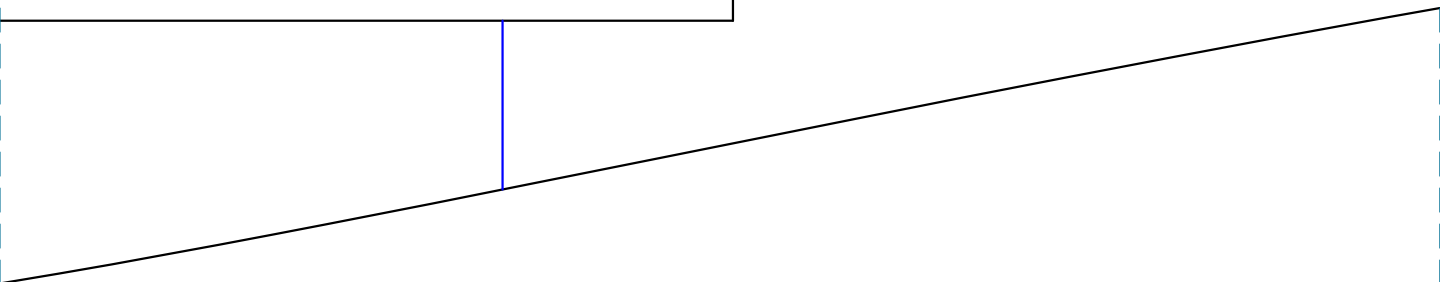
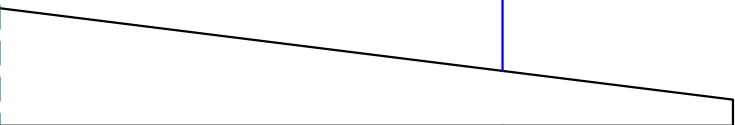
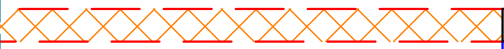
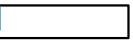
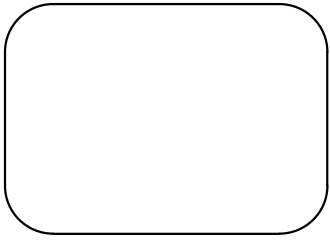
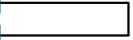
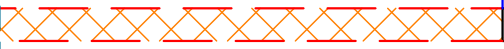


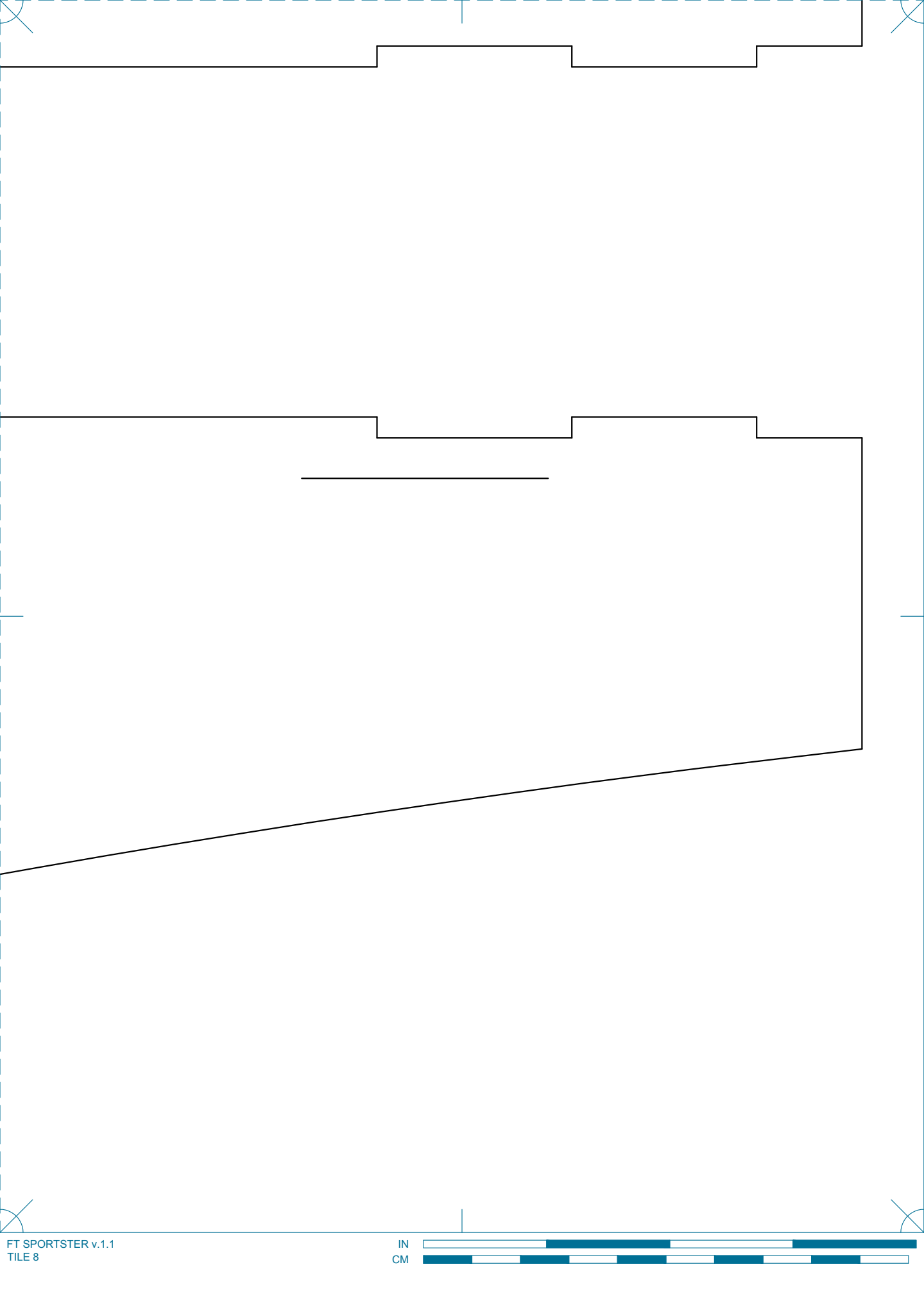


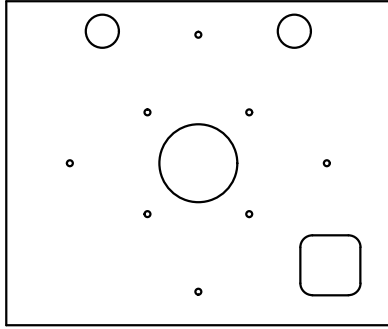
01
1

FUSELAGE
FOAM BOARD
FT SPORTSTER - v.1.1

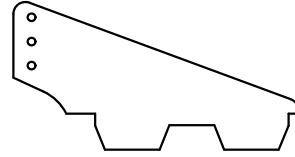




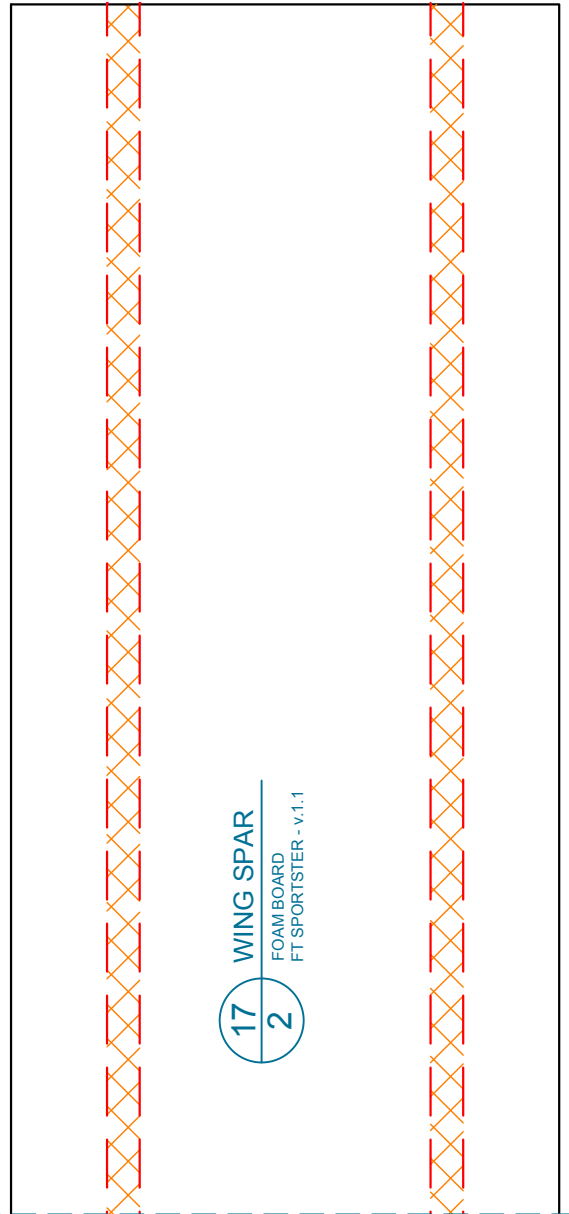
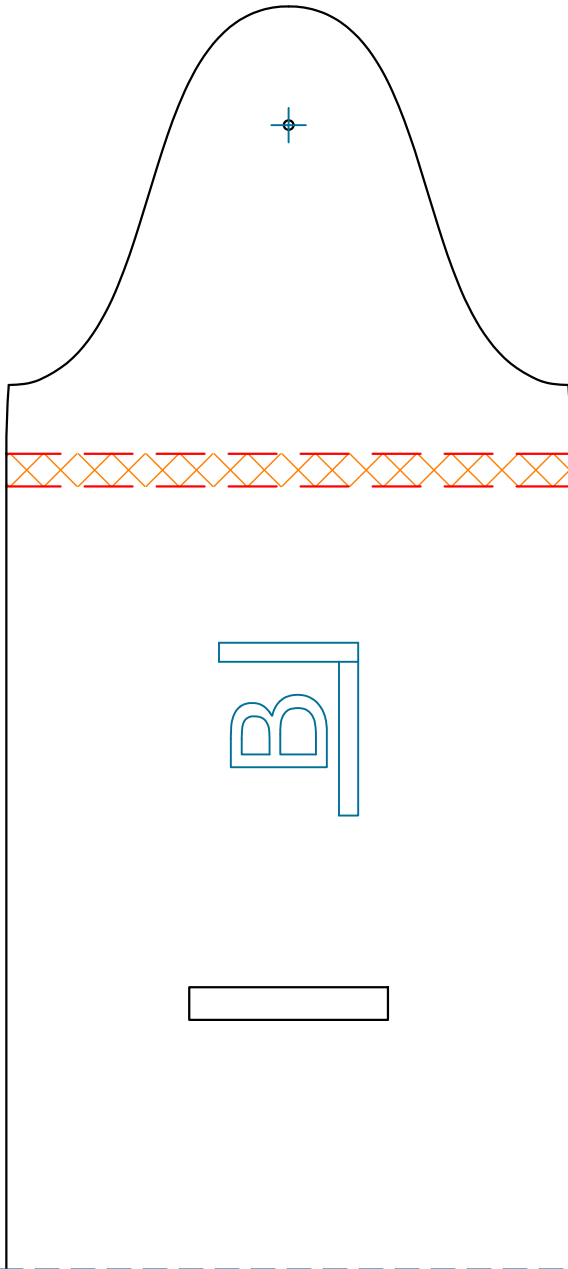




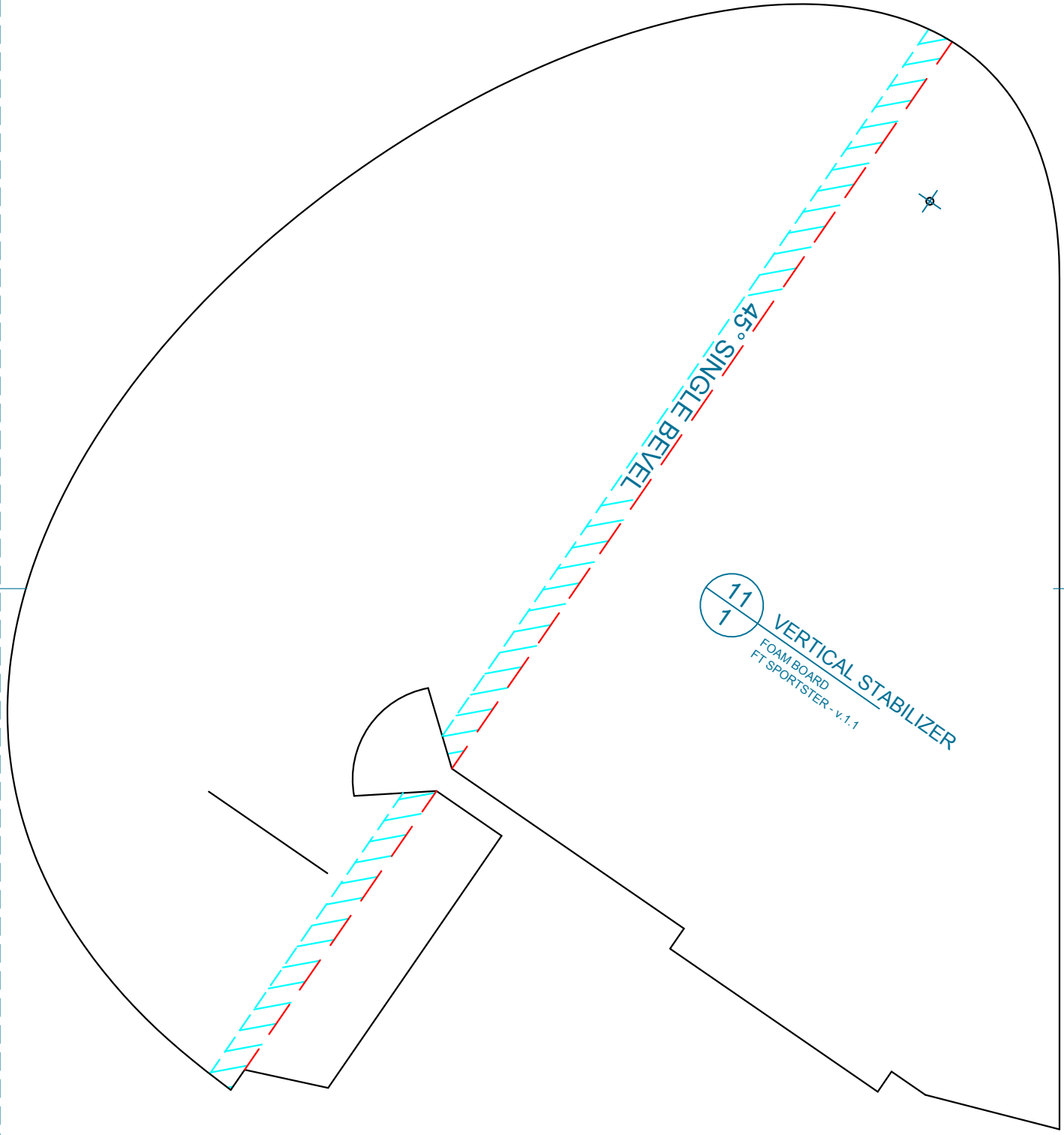
FT SWAPPABLE FIREWALL
1/32" (2.4mm) THICK
HOBBY GRADE PLYWOOD

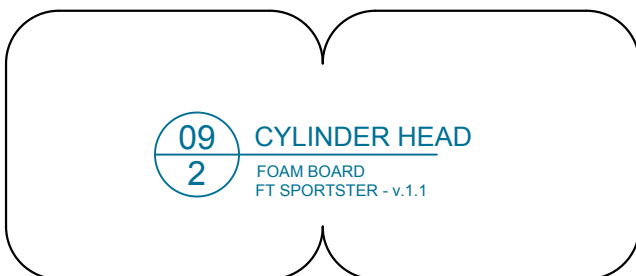
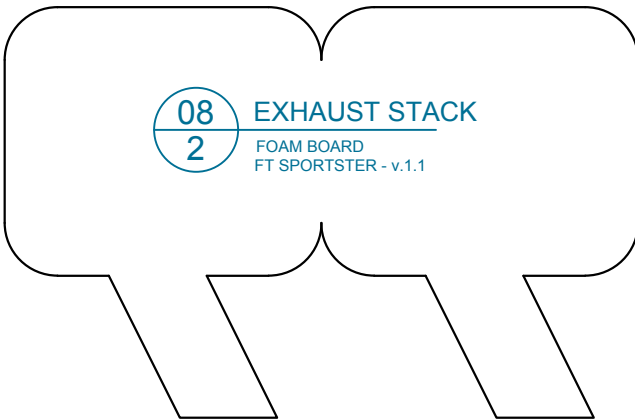
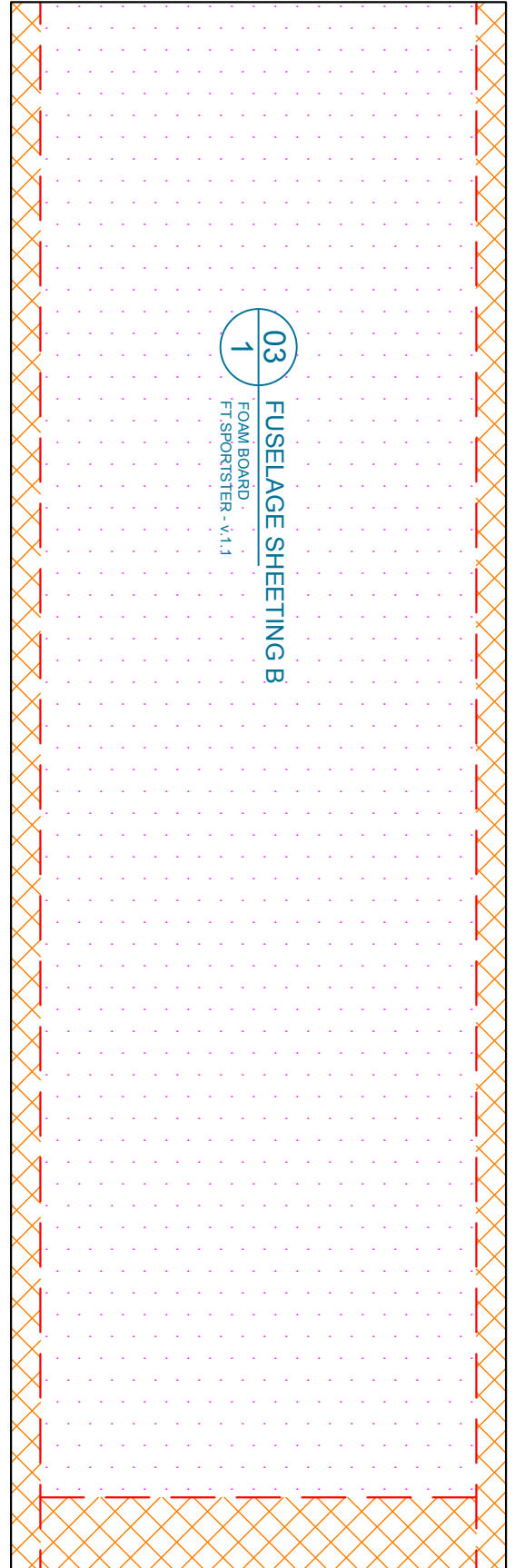


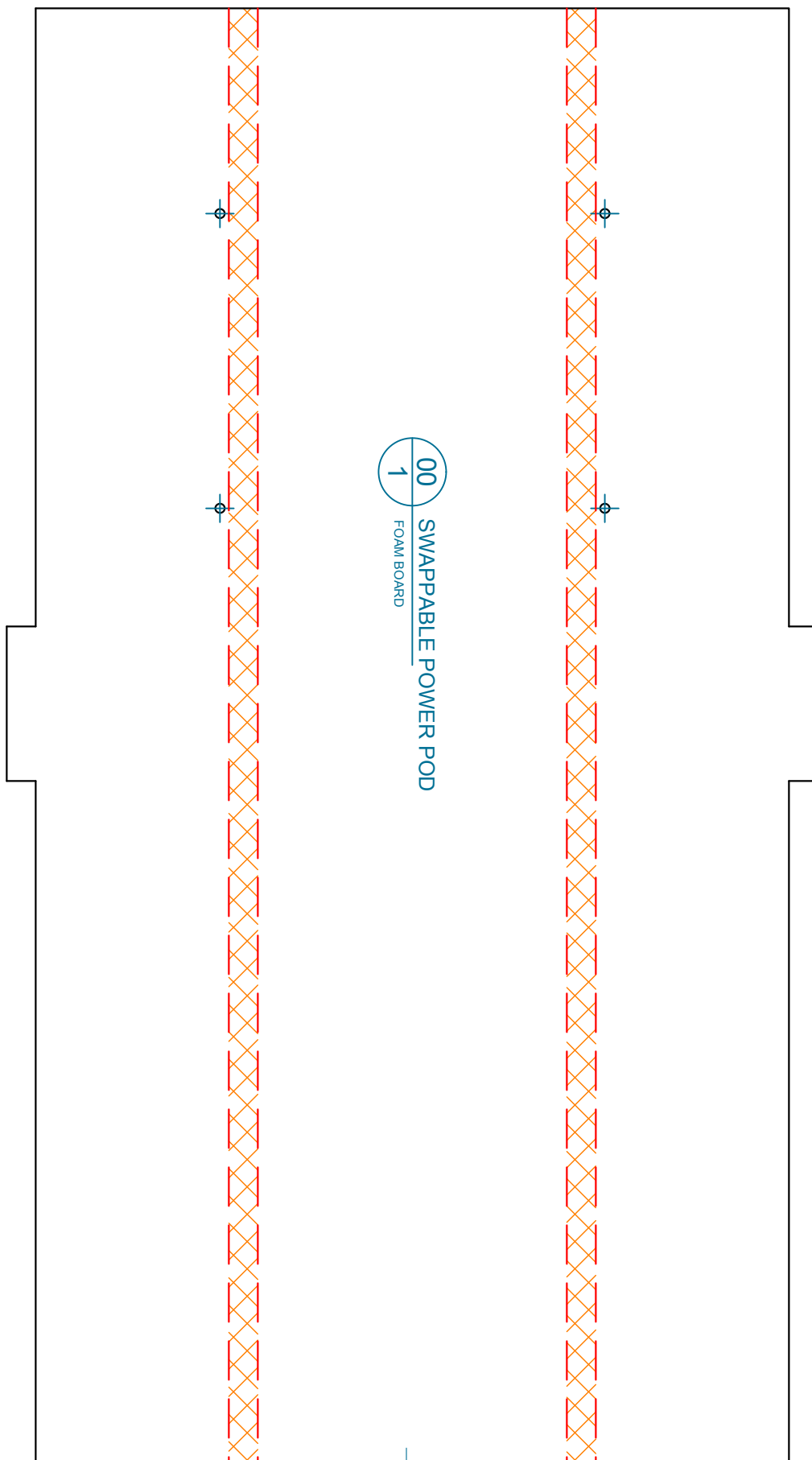
FT CONTROL HORN
1/16" (1.5mm) THICK
HOBBY GRADE PLYWOOD



17 WING SPAR
2 FOAM BOARD
FT SPORTSTER - v.1.1

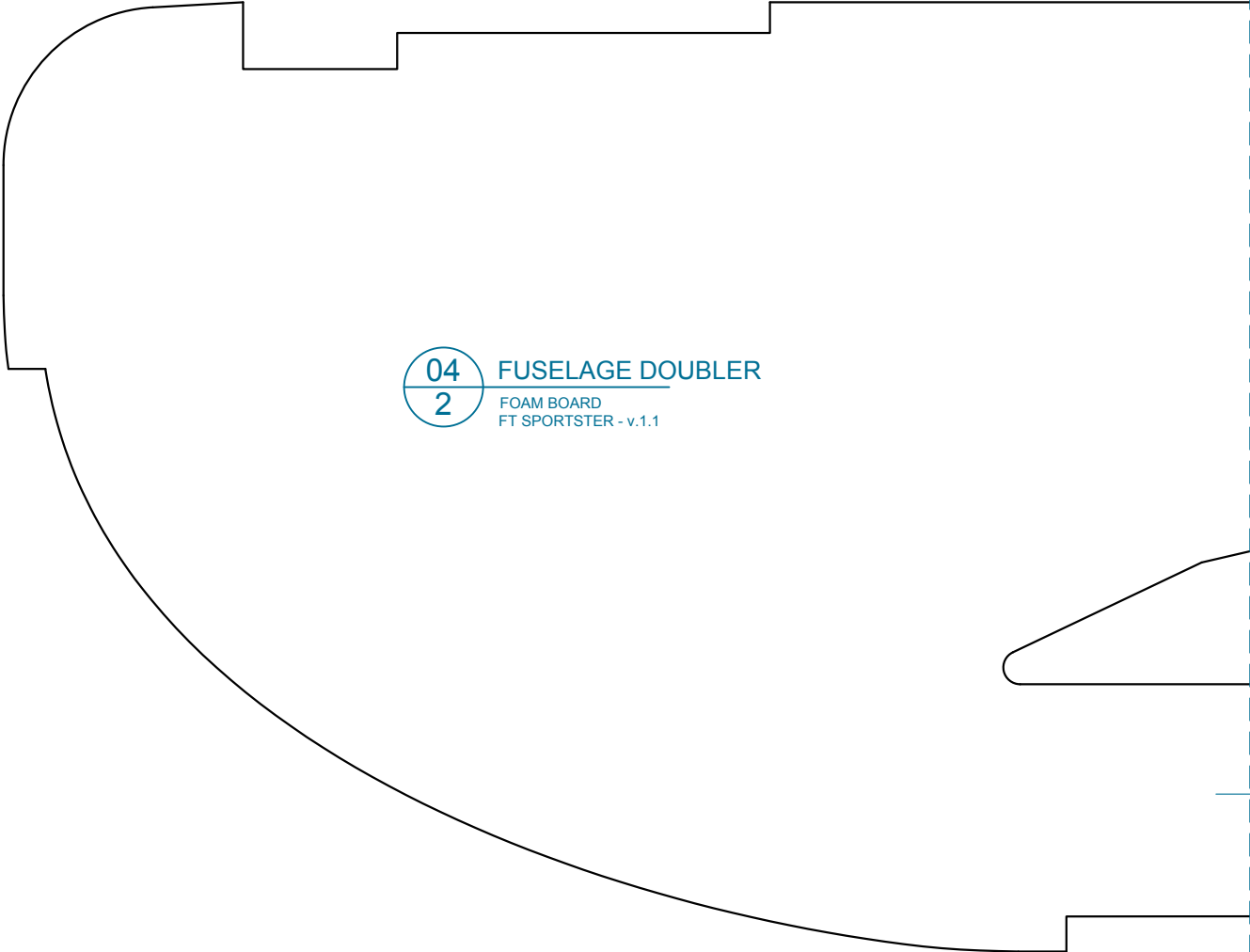




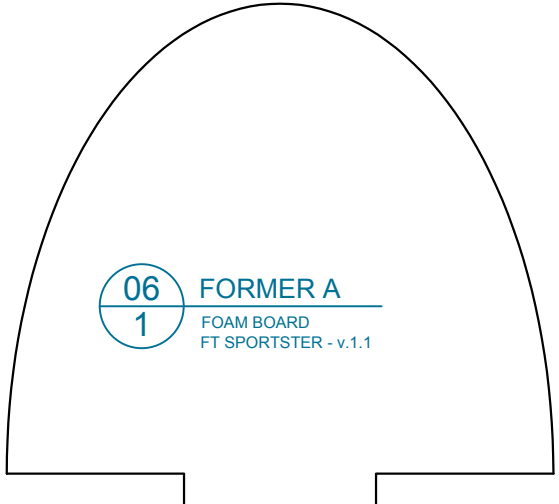
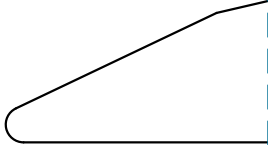


05 BATTERY HATCH
1
FOAM BOARD
FT SPORTSTER - v.1.1

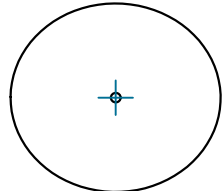




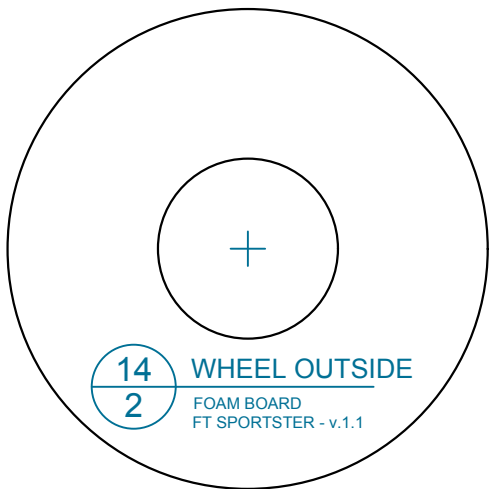
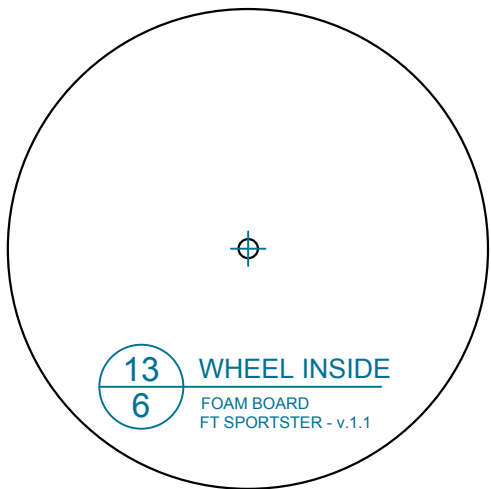
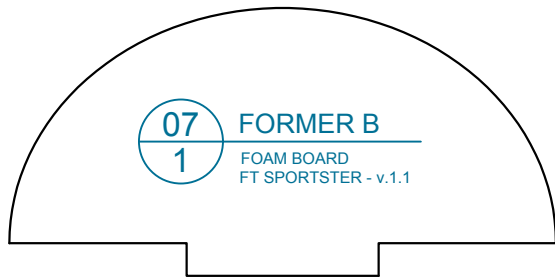
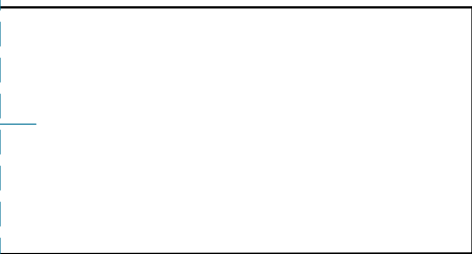
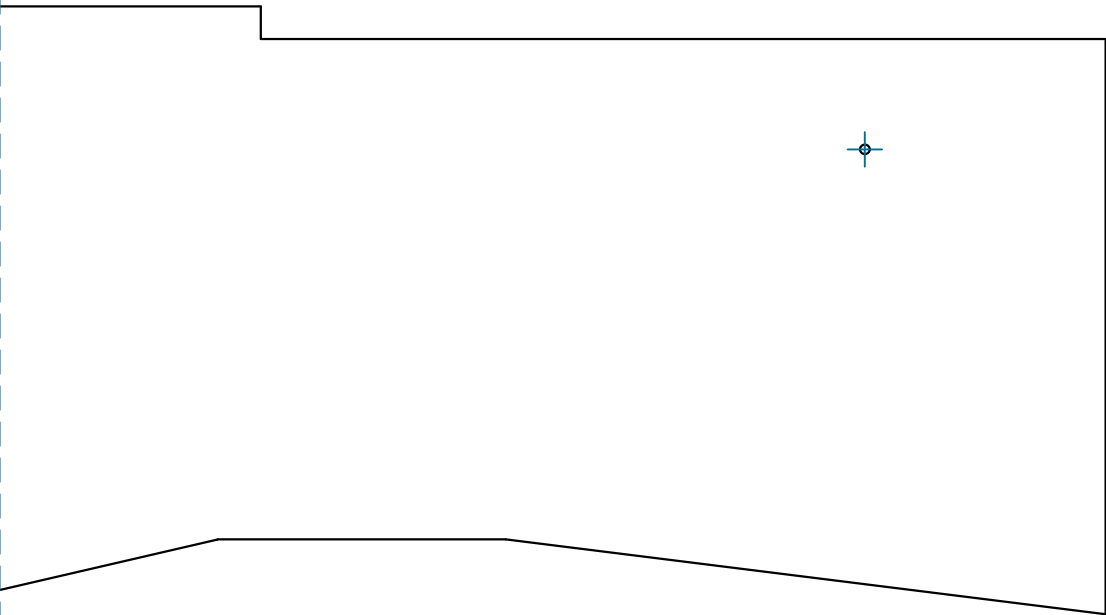
04 FUSELAGE DOUBLER
2 FOAM BOARD
FT SPORTSTER - v.1.1

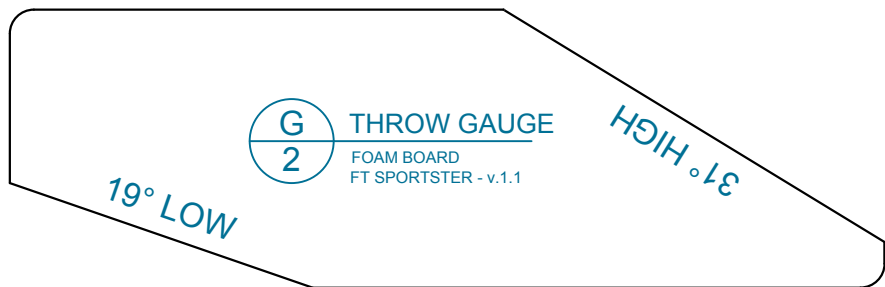
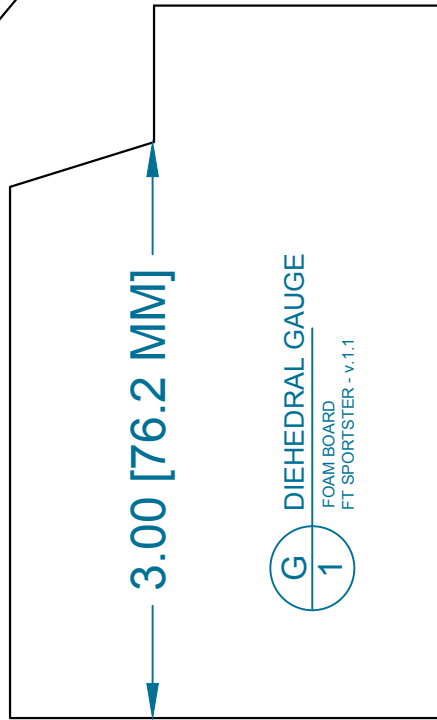
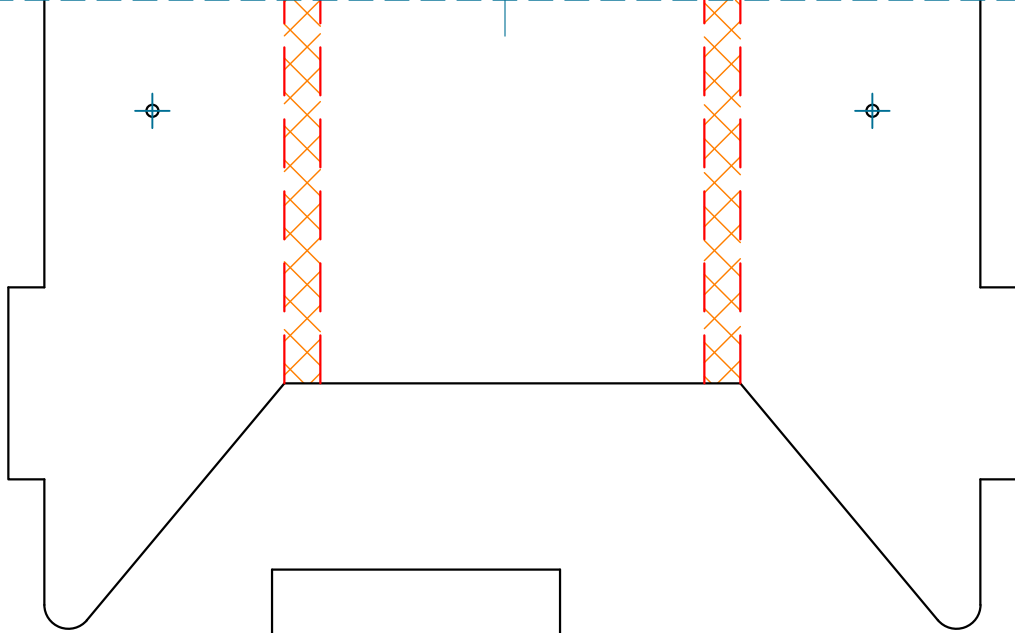


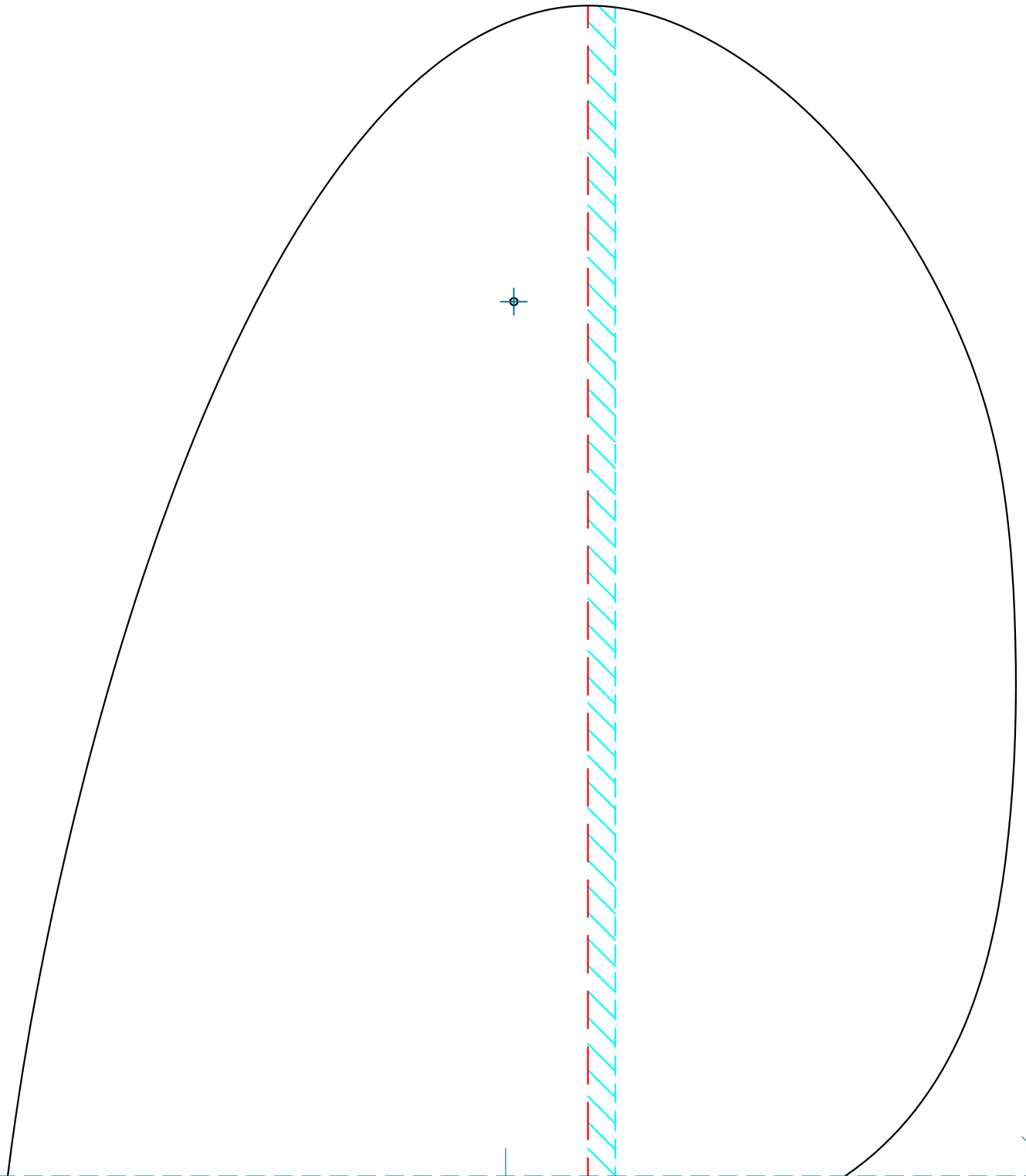
06 FORMER A
1 FOAM BOARD
FT SPORTSTER - v.1.1



10 HEAD REST
1 FOAM BOARD
FT SPORTSTER - v.1.1



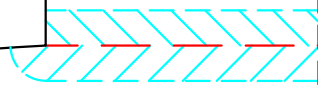


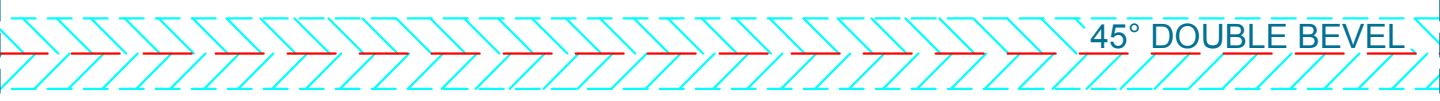
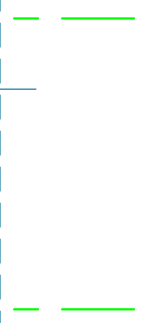


22
1

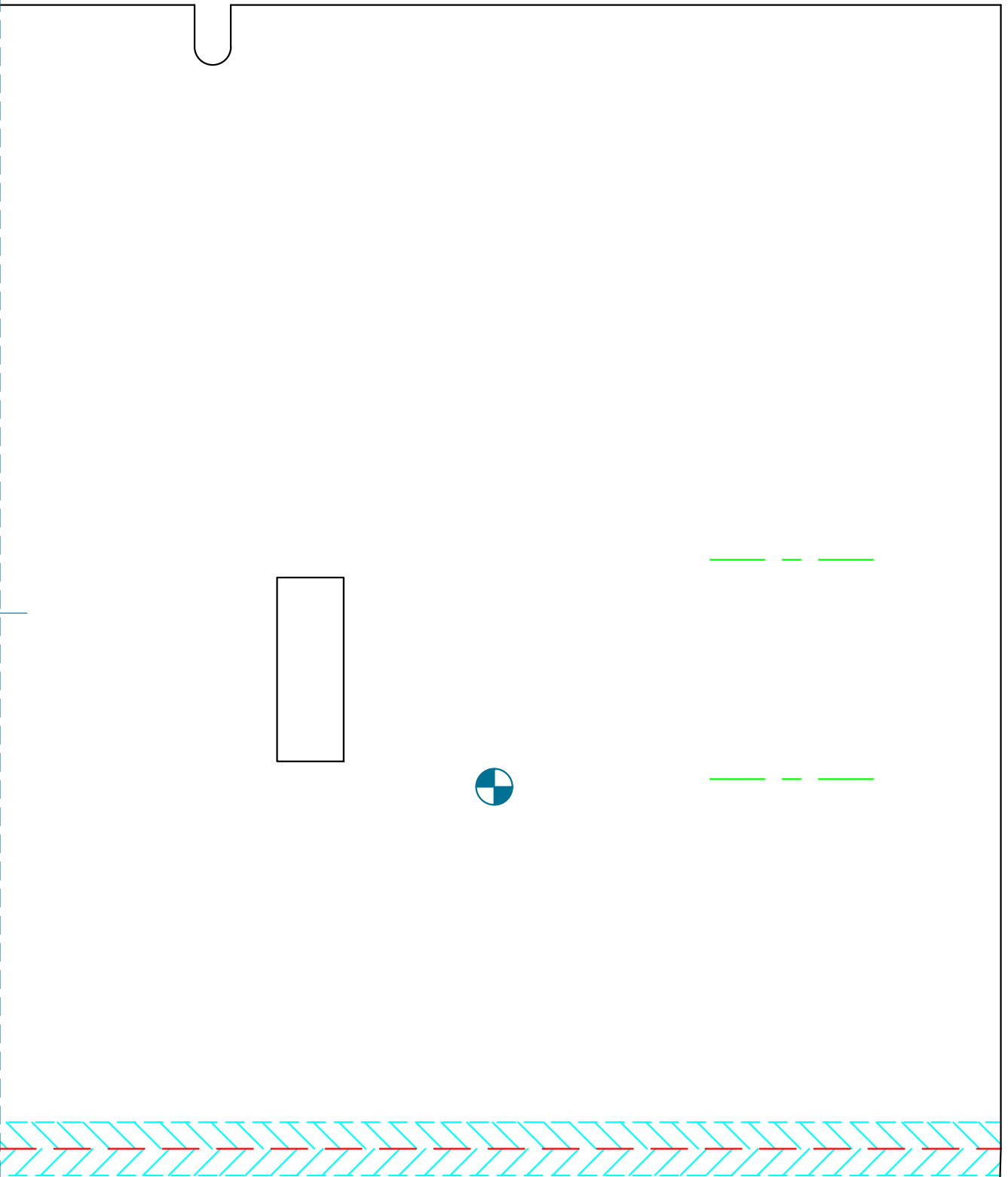
LANDING GEAR DOUBLER

FOAM BOARD
FT SPORTSTER - v.1.1



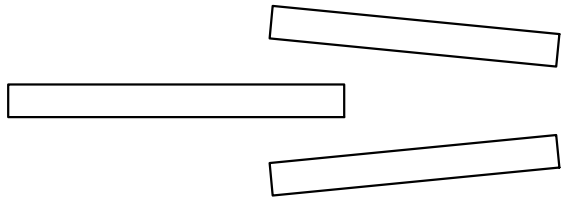


45° DOUBLE BEVEL

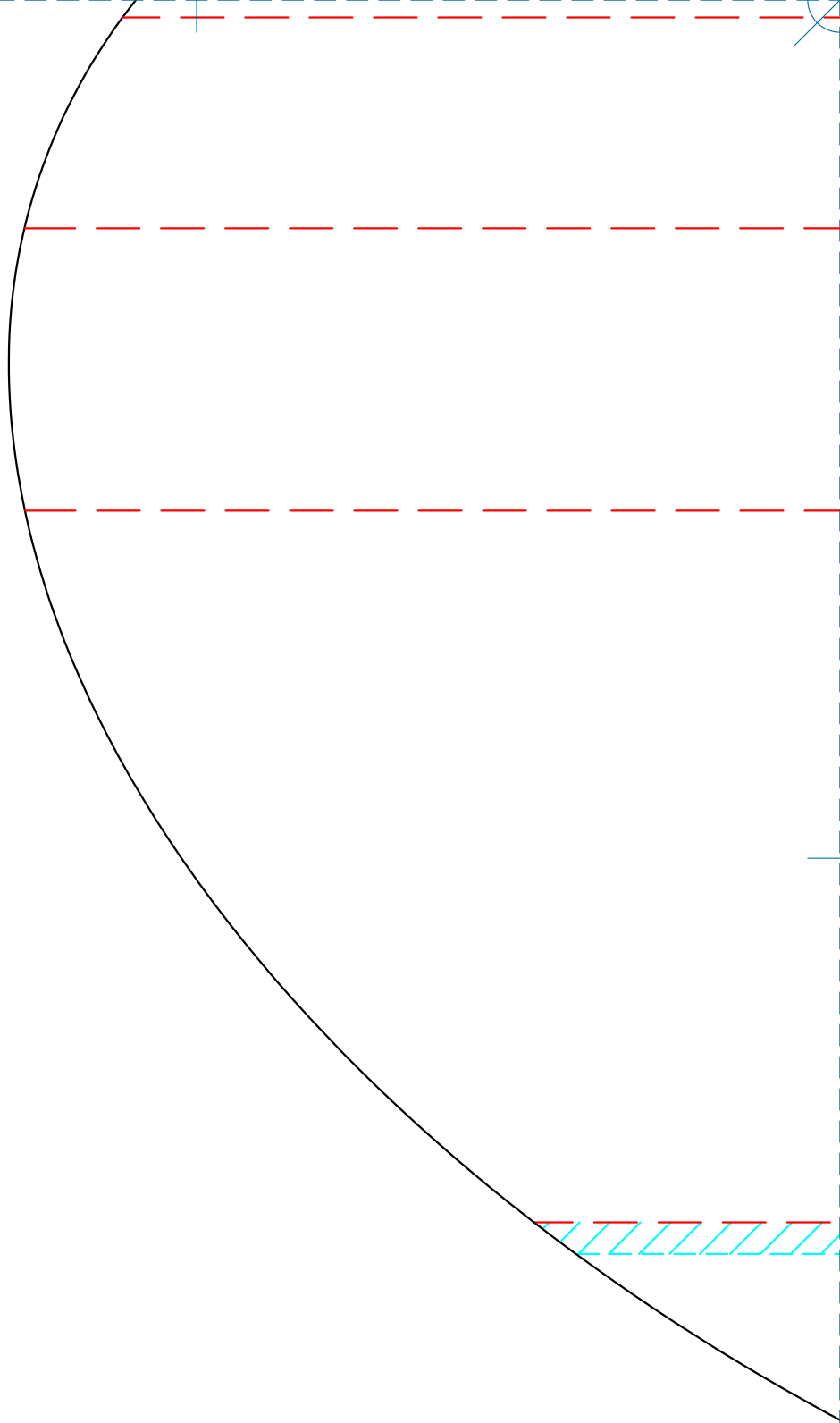


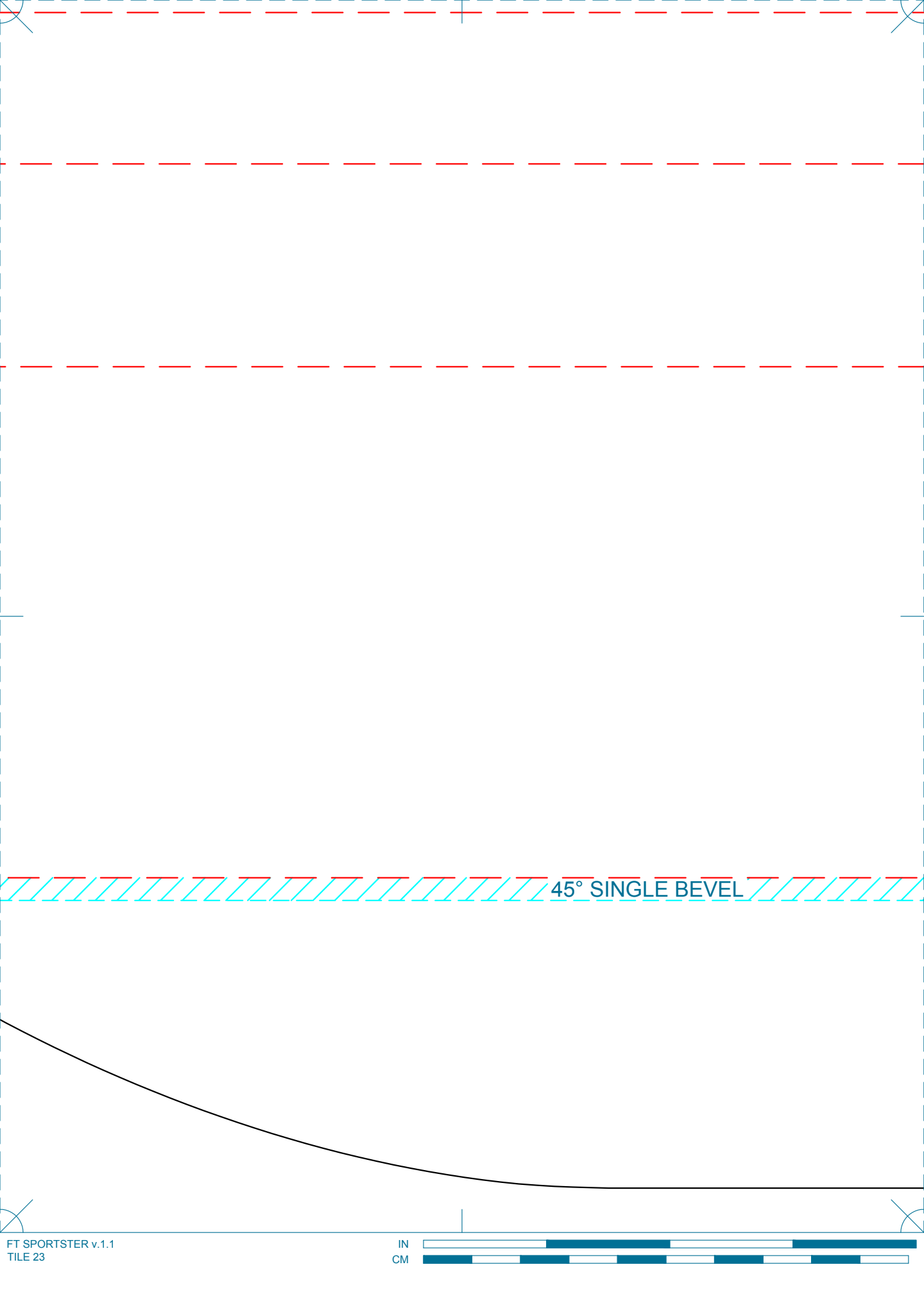
12 HORIZONTAL STABILIZER
1 FOAM BOARD
FT SPORTSTER - v.1.1

45° SINGLE BEVEL



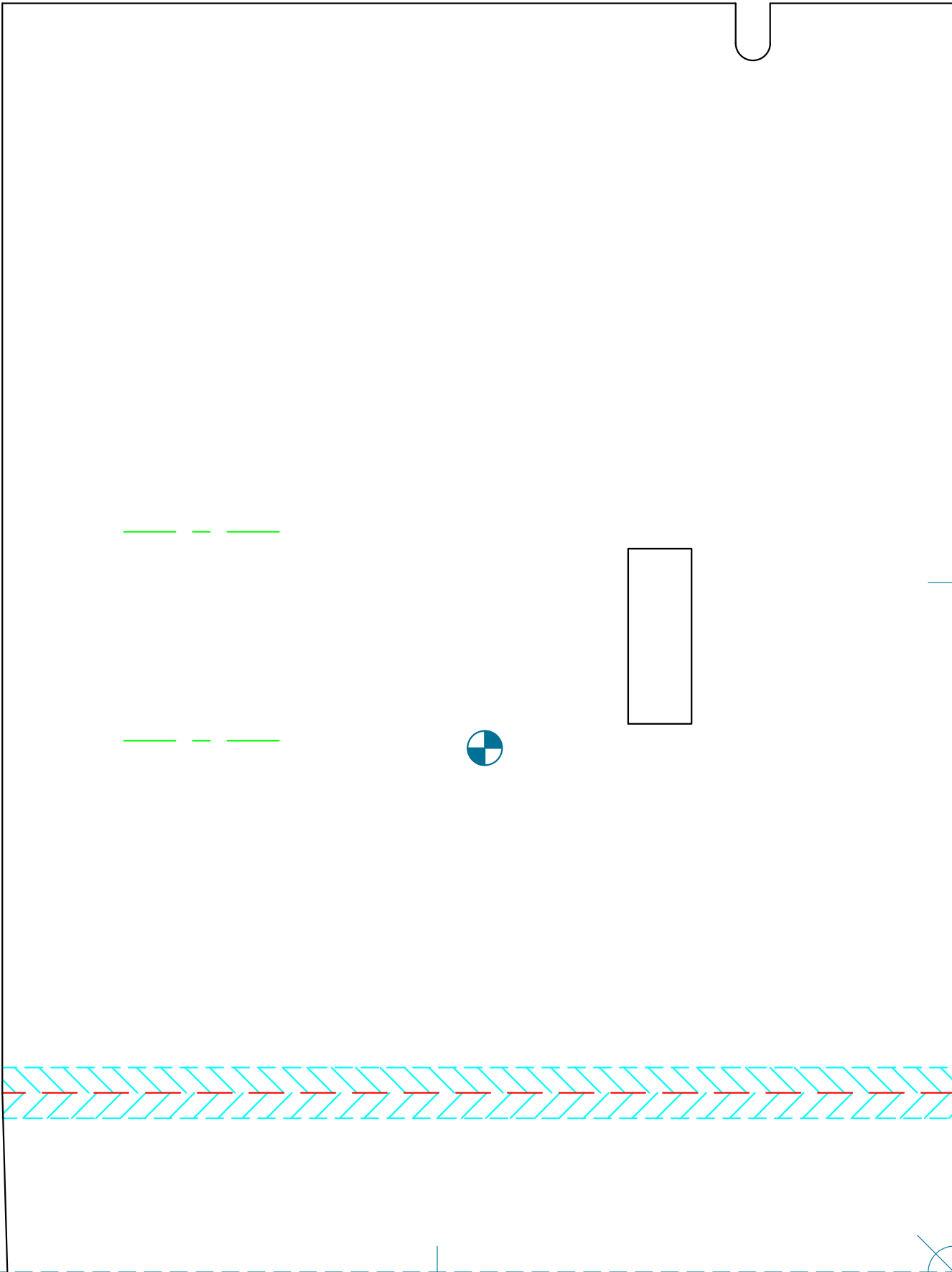
21 TRAILING EDGE SPACER
FOAM BOARD
2 FT SPORTSTER - v.1.1

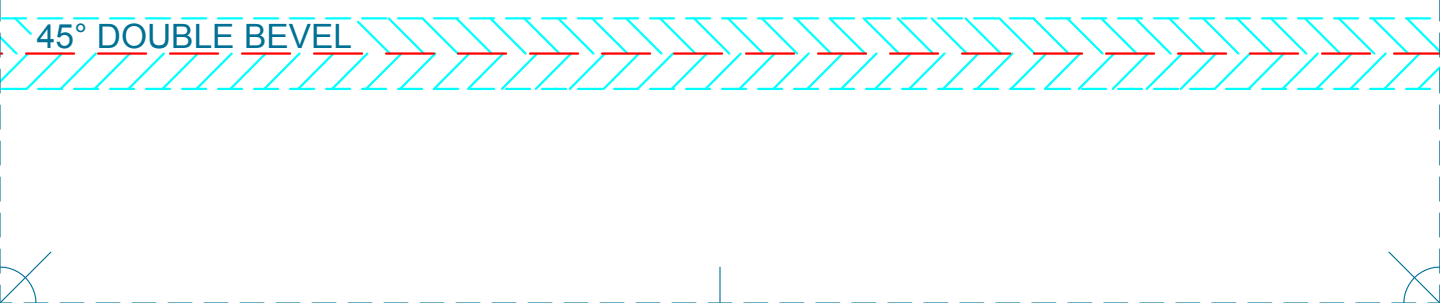




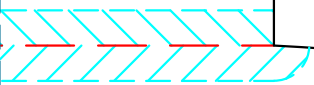
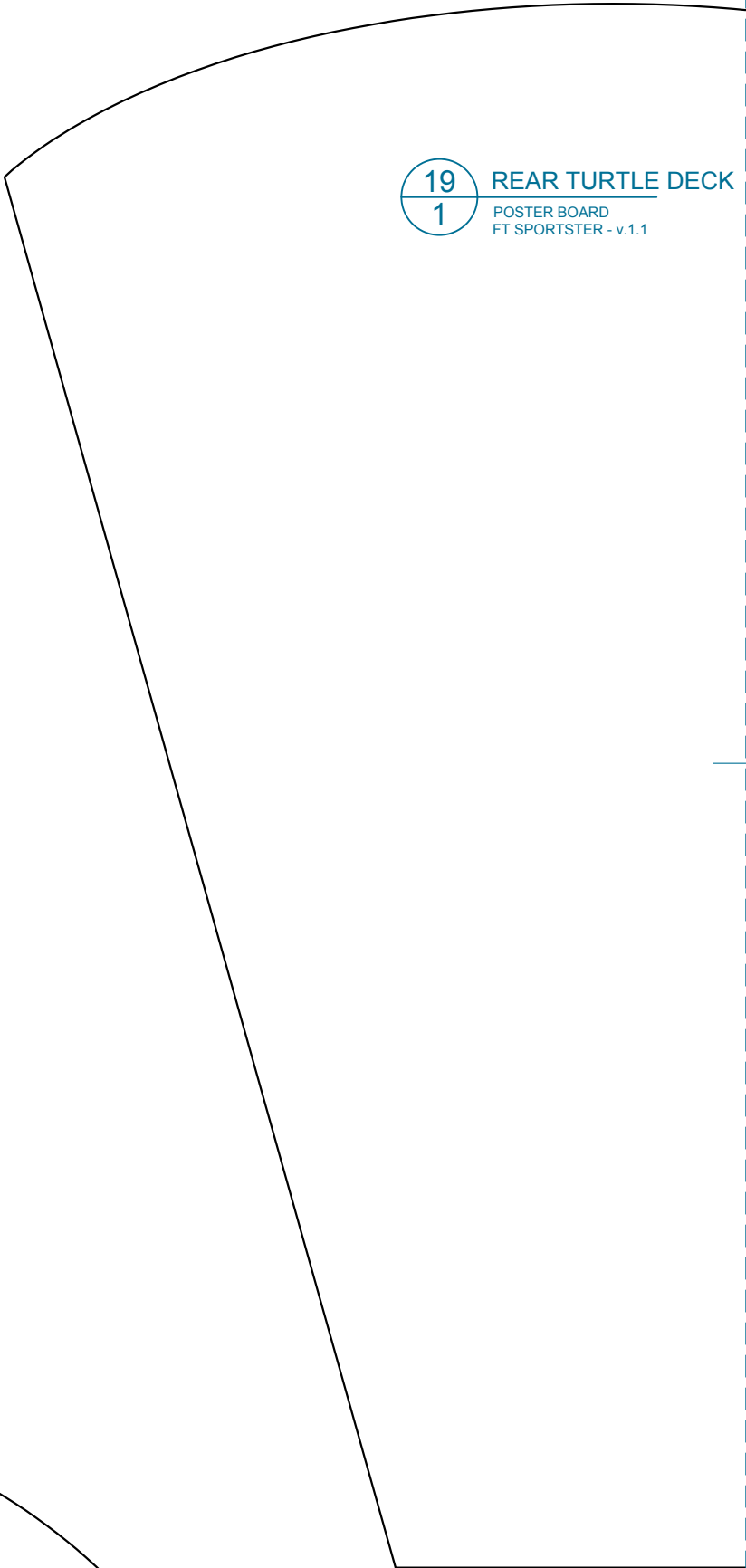
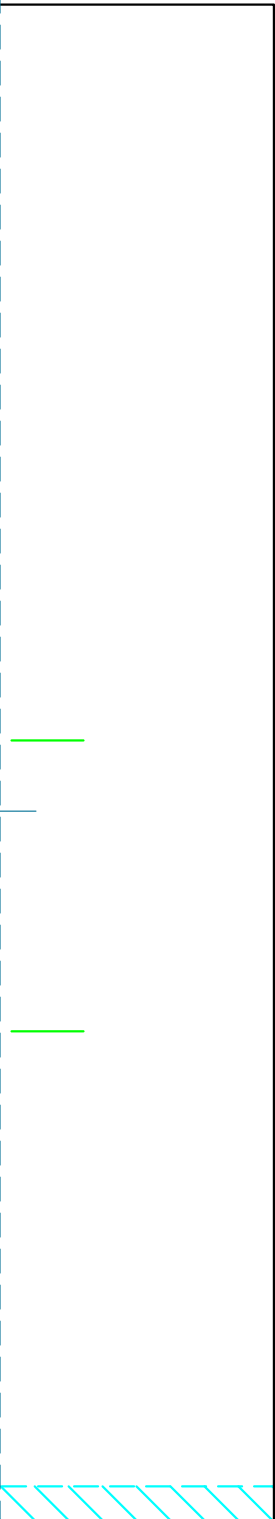
45° SINGLE BEVEL

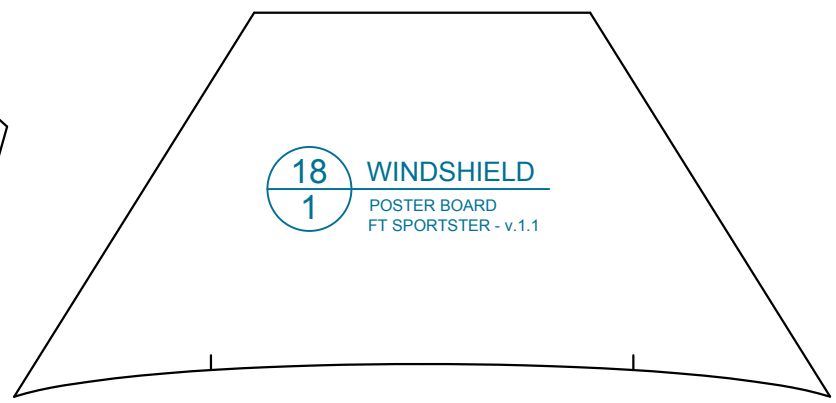
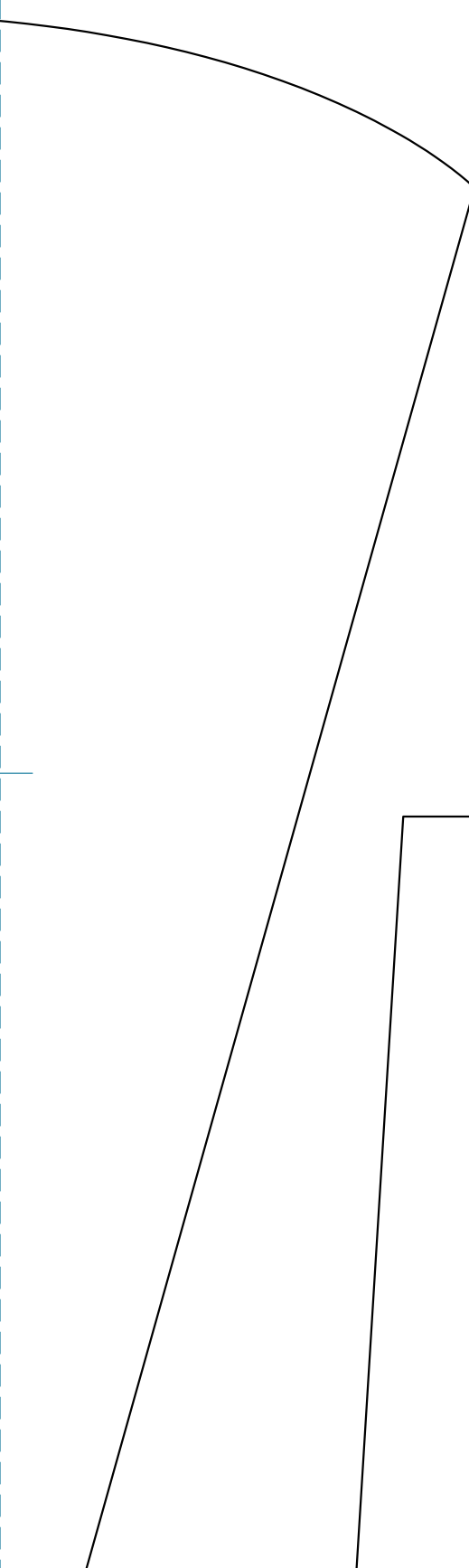
15 WING LEFT
1 FOAM BOARD
FT SPORTSTER - v.1.1



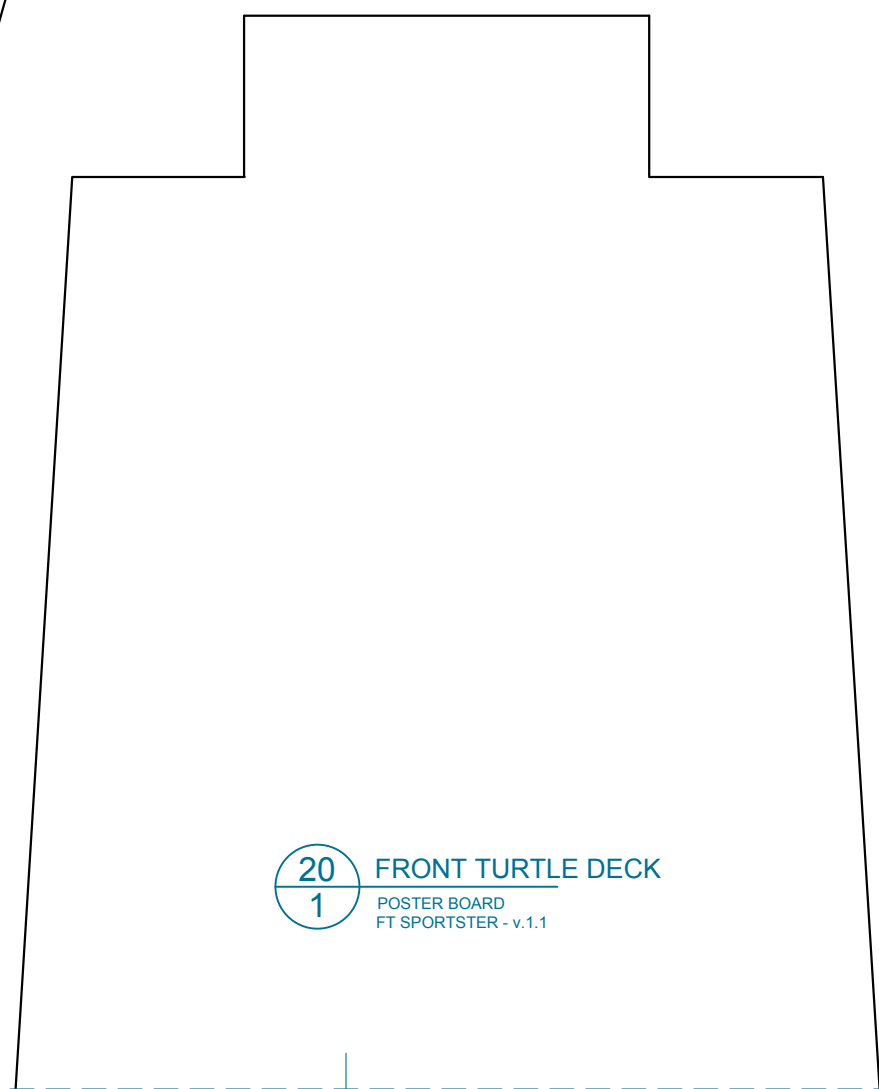


19 REAR TURTLE DECK
1 POSTER BOARD
FT SPORTSTER - v.1.1



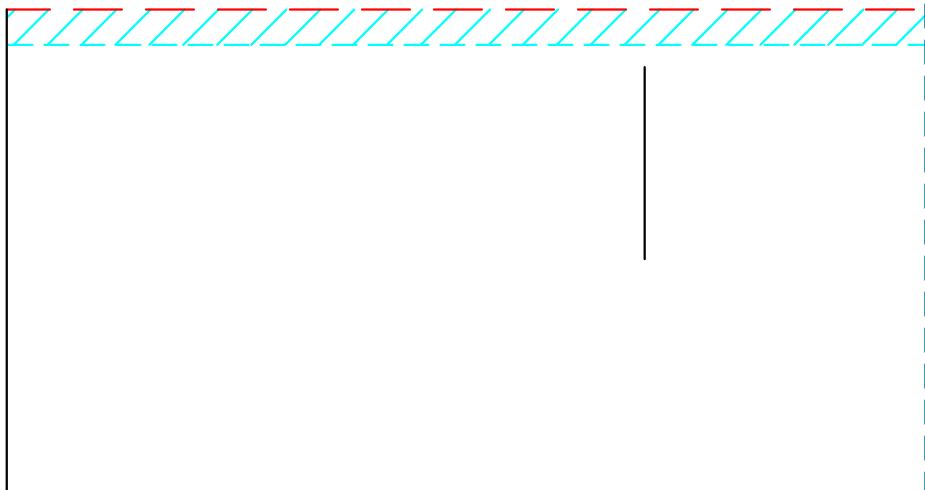


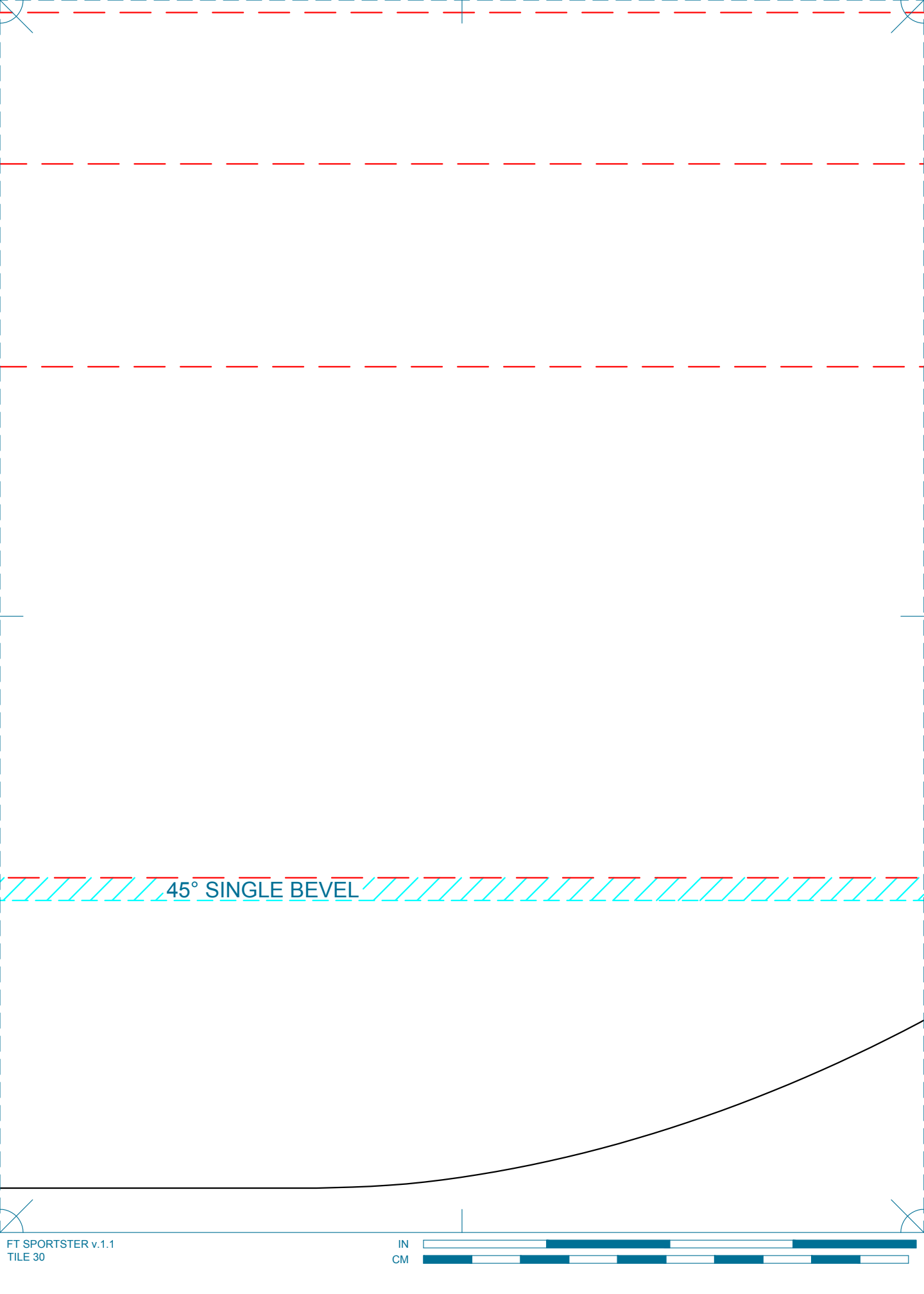
18 WINDSHIELD
1 POSTER BOARD
FT SPORTSTER - v.1.1



20 FRONT TURTLE DECK
1 POSTER BOARD
FT SPORTSTER - v.1.1

16 WING RIGHT
1 FOAM BOARD
FT SPORTSTER - v.1.1





45° SINGLE BEVEL

